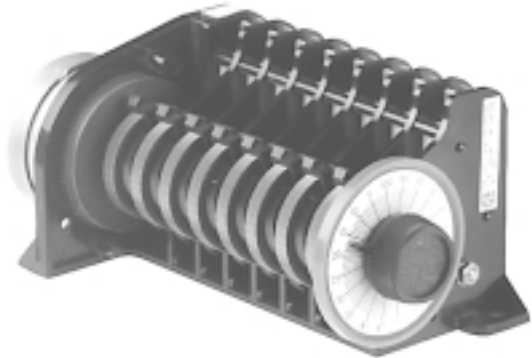


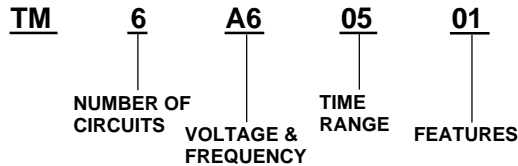
**TM TIME/MODULE®
REPEAT CYCLE TIMER**



***Extremely flexible
cam timer... modular
construction allows
custom configuration
to solve almost any
repeating time control
problem***

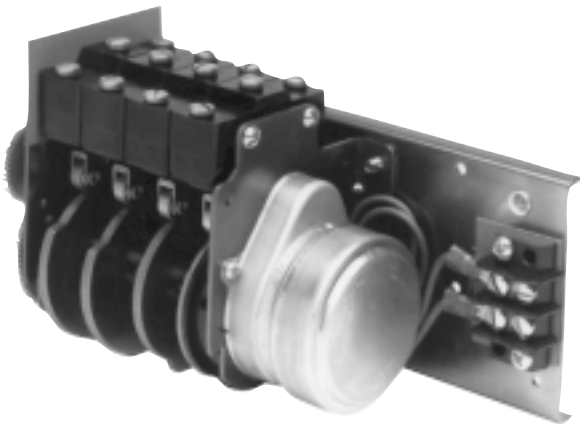
The TM series TIME/MODULE® consists of a series of modules, each interlocking with the other and keyed so they can be assembled only one way. Choosing the correct combination of modules will solve virtually all repeating time control problems. Standard units are available with one through ten switches.

There are six modules available, each distinctive in its separate function. They include a motor module with clutch, dial and knob module, a 10-1 reduction module, and three different switch modules as follows: one rise and drop tab with latch actuator (standard), two rise tabs with cam follower, and two 50-50 cam segments with cam follower.



FOR FULL SPECIFICATIONS, REQUEST BULLETIN NUMBER 345

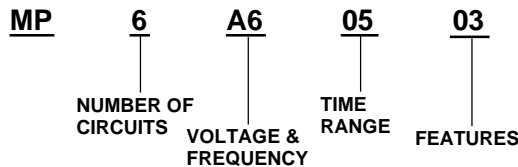
**MP MULTIPULSE®
REPEAT CYCLE TIMER**



***Cam timing for up to
12 circuits... more
than 250 time cycles
available***

The MULTIPULSE® Repeat Cycle timer consists of a synchronous motor driving a cam shaft through a gear train. The cam shaft rotates continuously as long as the motor is energized. Adjustable cams determine the point of closing and opening a switch during each cam shaft revolution.

The MULTIPULSE® is ideally suited to applications where operations occur in a predetermined sequence as in operating a series of dampers in a dust collecting system for periodic cleaning.



FOR FULL SPECIFICATIONS, REQUEST BULLETIN NUMBER 340